

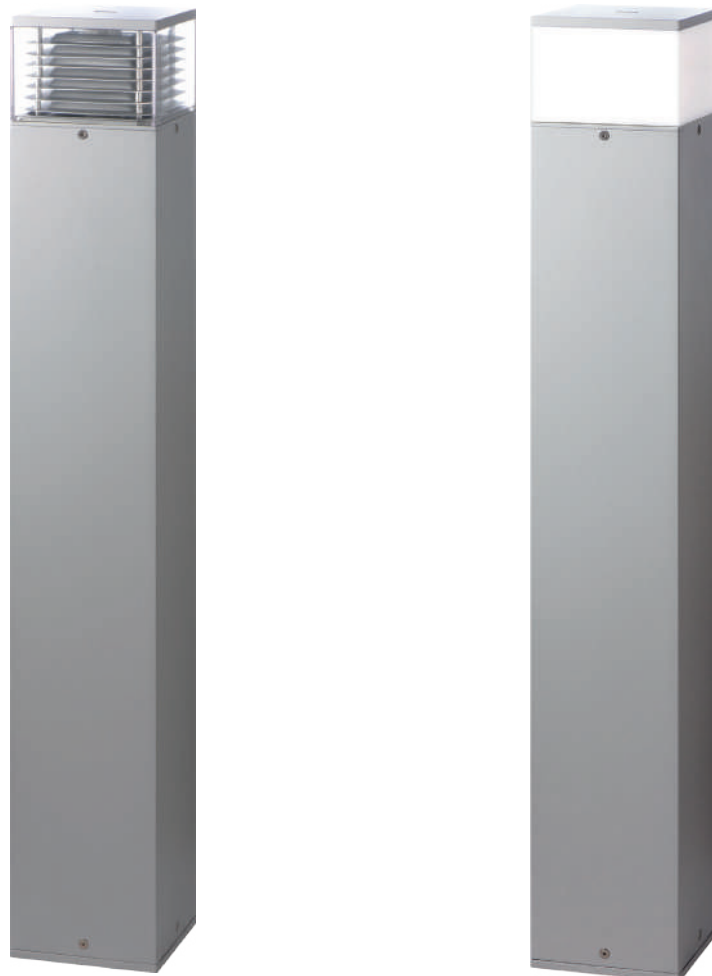
TOWER

■ BOLLARD

The **TOWER** bollard family combines sleek, clean-cut lines with advanced functionality, delivering scenic lighting ideal for modern architectural settings. The luminaire offers two diffuser options: an opal diffuser that emits soft, symmetrical light and a clear diffuser with slanted louvers designed to minimize glare while maintaining elegance. Its robust extruded aluminum body, paired with a high-impact-resistant polycarbonate cover, ensures exceptional durability against vandalism and corrosion, making it suitable for outdoor environments.

Equipped with a high-power COB LED, **TOWER** provides reliable and energy-efficient illumination. The bollards are available in multiple configurations and customizable heights to suit specific project requirements. The luminaire is designed for versatile applications, including gardens, pathways, squares, and other open spaces, blending seamlessly into various landscapes.

For added flexibility, the **TOWER** series supports retrofit solutions with E27 LED lamps. An optional anchorage unit is available, simplifying installation and ensuring stability. These features make the **TOWER** family a stylish and dependable choice for enhancing outdoor lighting projects.



www.unilamp.co.th/en/p/tower

Specification

- Designed, manufactured and tested according to IEC 60598.
- LM6 die cast aluminum and extruded aluminum body.
- Stainless steel screws.
- Nano ceramic surface conversion.
- Double layer coating.
- Polycarbonate protective cover.
- Post-cured silicone gasket.
- High quality LED module and driver.
- Pre-wired cable from the factory.
- Installation must be carried out according to the enclosed product manual.

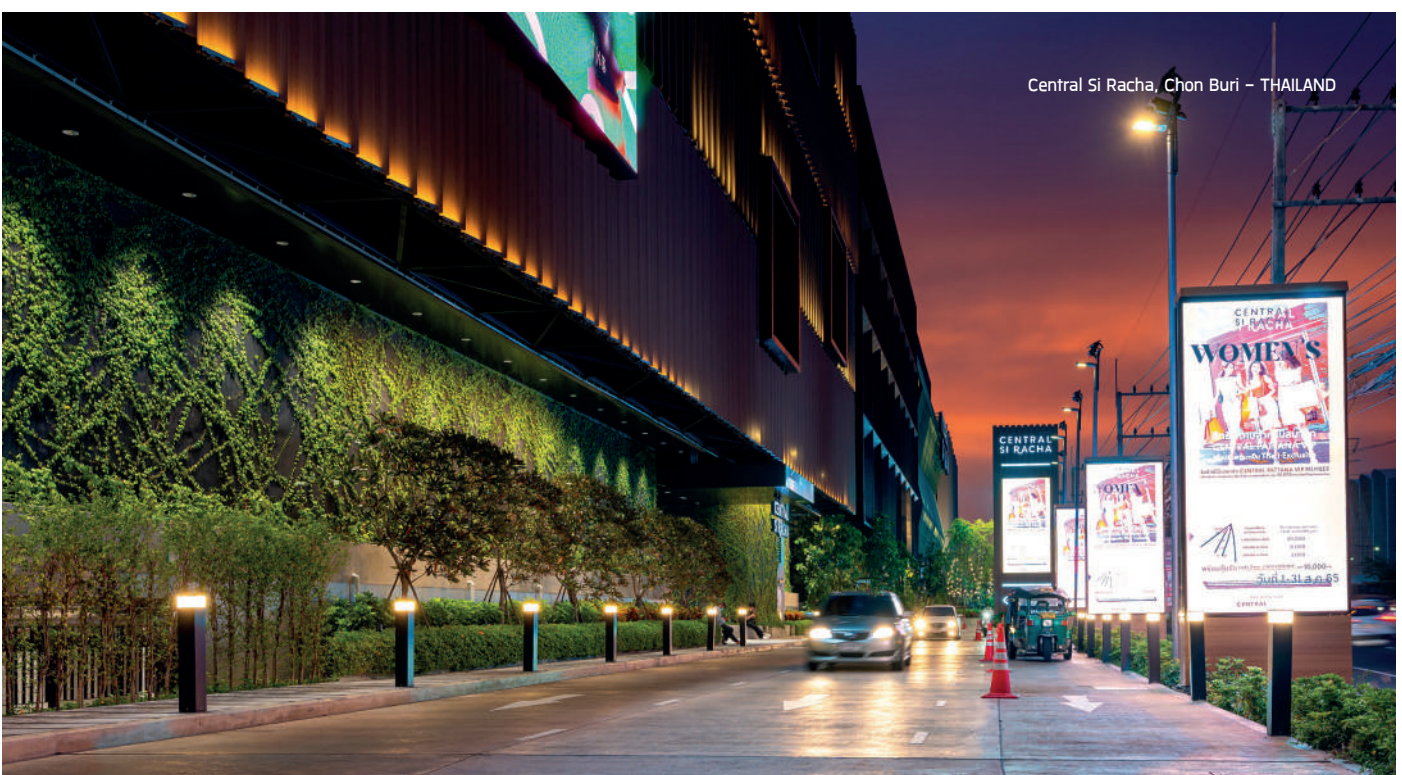
Available Color



****Custom colors are available on request.**



Private Residence – THAILAND



Central Si Racha, Chon Buri – THAILAND

TOWER



TOWER



TOWER



Application Type : Bollard

Subgroup : Semi shielded bollard/ General bollard

TOWER / 7152	
TOWER / 7153	
Luminaire Performance	
	370 - 1660 lm
	20 - 42 W
	16 - 39 lm/W
Beam Options	
Color Temperature	3000K
Controller	On-off/ On-off [AC LED]
Input Voltage	220-240VAC 50/60HZ

Accessories	
	Anchor bolt
	IP68 Connector

TOWER

	Product Code	Luminaire Wattage	Beam	CCT	Luminaire Lumen	Efficacy	Controller		Ordering Code
							⏻	⏻ AC LED	
TOWER	OD-7152								
		20 W	N/A	3000 K	370 lm	18 lm/W		•	7152-0-3-873-XX
		28 W	N/A	3000 K	460 lm	16 lm/W	•		7152-0-3-887-XX
	OD-7153								
		20 W	N/A	3000 K	620 lm	31 lm/W		•	7153-0-3-873-XX
		28 W	N/A	3000 K	640 lm	22 lm/W	•		7153-0-3-887-XX
	42 W	N/A	3000 K	1660 lm	39 lm/W	•		7153-0-3-902-XX	

*Please contact sales team for special request.

