

QUARK

INGROUND

The **QUARK** family is a range of versatile in-ground uplighters designed for walkover applications, offering a shallow housing for minimal recess depth. Built to last, **QUARK** features a robust body crafted from copper-free LM6 die-cast aluminum and a GFR polymer recess housing, ensuring durability and resistance to harsh environmental conditions.

Engineered for high-power LEDs, **QUARK** provides multiple color temperature options, including three standard static white and RGBW, all offering high color consistency and an impressive color rendering index (CRI) for vivid, true-to-life lighting effects. The luminaire is available with various light distribution patterns, such as narrow, medium, wide, and asymmetric, allowing for tailored illumination to suit a variety of applications.

QUARK is perfect for illuminating outdoor spaces such as plants, flagpoles, columns, walls, building facades, and architectural landmarks. The fixture comes pre-wired with a supply cable for in-ground applications, and is internally potted to prevent humidity and condensation, ensuring long-lasting, reliable performance. For added customization, accessories like a honeycomb louver, softening lens, and gel-filled IP68 connector are available to enhance the fixture's performance and flexibility. Whether enhancing the ambiance of outdoor landscapes or highlighting architectural features, **QUARK** delivers powerful, efficient, and adaptable lighting solutions.



NEW! Mini QUARK Square - CC [DMX]



NEW! Mini QUARK Round - CC [DMX]



RGBW



www.unilamp.co.th/en/p/quark

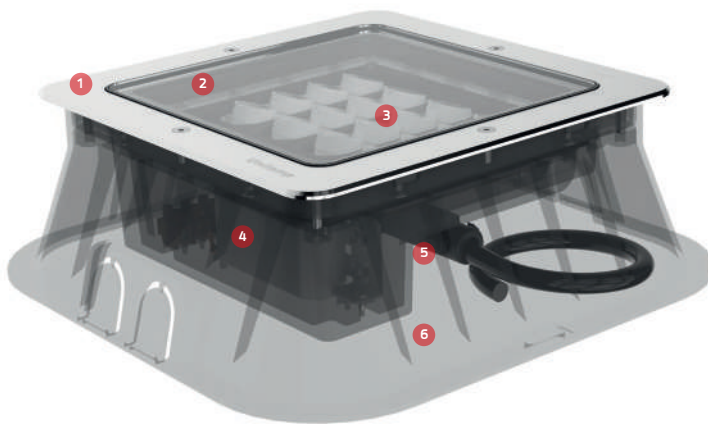
Specification

- Designed, manufactured and tested according to IEC 60598.
- Stainless steel, LM6 die-cast aluminum housing.
- Stainless steel screws.
- Nano ceramic surface conversion.
- Double layer coating.
- Safety glass cover.
- High performance PC lens/ aluminum reflector.
- Post-cured silicone gasket.
- High quality LED module.
- Pre-wired cable from the factory.
- Installation must be carried out according to the enclosed product manual.

Available Color



****Custom colors are available on request.**



Mini QUARK

1. Front Frame

Corrosion resistant marine grade 316 stainless steel frame.

2. Cover

Impact resistant tempered safety glass cover. Glass flushes to the front frame, no accumulation of dust and water.

3. Lens + LED

LED and optical lens from world renowned manufacturer. Available in narrow, medium, wide, elliptical, asymmetric forward forward – 2700K, 3000K and 4000K CRI>80 3-Step SDCM.

4. Driver

High quality LED constant current driver. Conform to applicable safety standards and electromagnetic compatibility.

5. Protest against water

Factory sealed with cable grand and Neoprene cable with Anti-Humidity kit.

6. Recess Housing

Ground recess housing made from engineering polymer with glass-fiber reinforced. The luminaires can be driven over by small vehicles at low speed.

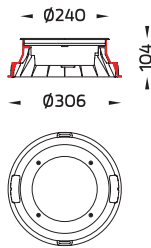
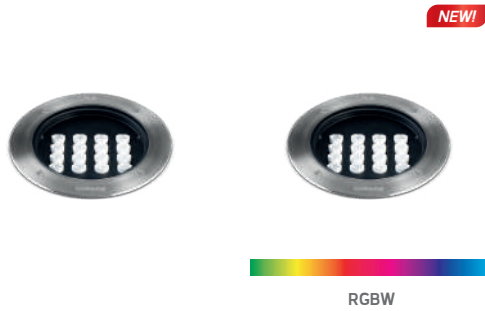
R-Evolve, South Perth – AUSTRALIA



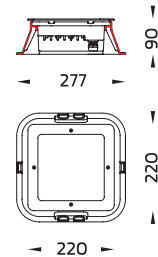
QUARK



Mini QUARK Round



Mini QUARK Square



QUARK

Application Type : Inground
Subgroup : Up light

Mini QUARK Round/ 9035
Mini QUARK Round - CC/ 9035
Mini QUARK Round - CC (DMX)/ 9035

NEW!

Luminaire Performance

1470 - 3010 lm
19 - 32 W
58 - 108 lm/W

Beam Options



Color Temperature

2700K/ 3000K/ 4000K/ RGBW

Controller

On-off/ DALI/ Remote

Input Voltage

220-240Vac 50/60Hz
500mA, 45.6VDC, Uin MAX 150VDC
500mA, 4CHx9Vdc-12Vdc, Uin max 150Vdc
700mA, 4CHx9.5Vdc-12.5Vdc, Uin max 150Vdc

QUARK

Application Type : Inground
Subgroup : Up light

Mini QUARK Square/ 9045
Mini QUARK Square - CC/ 9045
Mini QUARK Square - CC (DMX)/ 9045

NEW!

Luminaire Performance

1440 - 2670 lm
19 - 32 W
57 - 115 lm/W

Beam Options



Color Temperature

3000K/ 4000K/ RGBW

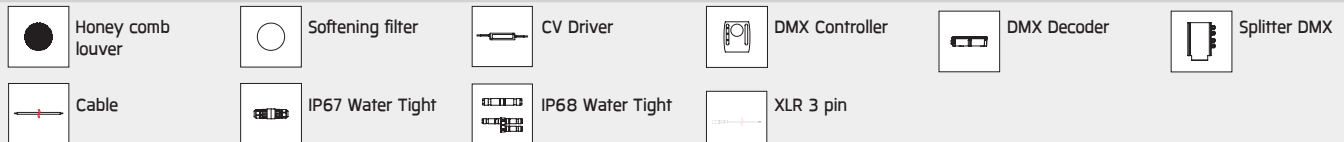
Controller





On-off/ Remote

Input Voltage

220-240Vac 50/60Hz
500mA, 4CHx9Vdc-12Vdc, Uin max 150Vdc
700mA, 4CHx9.5Vdc-12.5Vdc, Uin max 150Vdc

Accessories



Product Code	Luminaire Wattage	Beam	CCT	Luminaire Lumen	Efficacy	Controller				Ordering Code
						⏻	☀️	DALI	REMOTE	
Mini Quark Round   RGBW	19 W	12°	3000 K	2070 lm	108 lm/W	•				9035-5-3-897-91
			2700 K	2070 lm	108 lm/W	•				9035-5-3-523-91
		25°	3000 K	1860 lm	97 lm/W	•				9035-6-3-897-91
			4000 K	2010 lm	105 lm/W	•				9035-6-3-898-91
		2700 K	1860 lm	97 lm/W	•					9035-6-3-523-91
			3000 K	1780 lm	93 lm/W	•				9035-7-3-897-91
	22 W	46°	2700 K	1780 lm	93 lm/W	•				9035-7-3-523-91
			3000 K	1770 lm	93 lm/W	•				9035-9-3-897-91
		Asymmetric	4000 K	1910 lm	100 lm/W	•				9035-9-3-898-91
			2700 K	1770 lm	93 lm/W	•				9035-9-3-523-91
		25°	RGBW	1620 lm	73 lm/W				•	9035-6-D-687-91
			46°	RGBW	1470 lm	66 lm/W				•
	23 W	Asymmetric	RGBW	1550 lm	70 lm/W				•	9035-9-D-687-91
			2700 K	2410 lm	104 lm/W				•	9035-9-2-524-91
			3000 K	2410 lm	104 lm/W				•	9035-9-2-867-91
	28 W	12°	3000 K	2810 lm	100 lm/W	•				9035-5-3-867-91
			4000 K	3010 lm	107 lm/W	•				9035-5-3-868-91
			2700 K	2810 lm	100 lm/W	•				9035-5-3-524-91
		25°	3000 K	2810 lm	100 lm/W			•		9035-5-5-867-91
			3000 K	2530 lm	90 lm/W	•				9035-6-3-867-91
			4000 K	2710 lm	96 lm/W	•				9035-6-3-868-91
	28 W	46°	3000 K	2420 lm	86 lm/W	•				9035-7-3-867-91
			3000 K	2420 lm	86 lm/W			•		9035-7-5-867-91
		Asymmetric	3000 K	2410 lm	86 lm/W	•				9035-9-3-867-91
4000 K			2580 lm	92 lm/W	•				9035-9-3-868-91	
2700 K			2410 lm	86 lm/W	•				9035-9-3-524-91	
2700 K			2410 lm	86 lm/W			•		9035-9-5-524-91	
32 W	25°	3000 K	2410 lm	86 lm/W			•		9035-9-5-867-91	
		3000 K	2410 lm	86 lm/W			•		9035-9-5-867-91	
	46°	RGBW	2070 lm	64 lm/W				•	9035-6-D-740-91	
		RGBW	1860 lm	58 lm/W				•	9035-7-D-740-91	
Asymmetric	RGBW	1980 lm	61 lm/W				•	9035-9-D-740-91		
Mini Quark Square   RGBW	19 W	12°	3000 K	2090 lm	110 lm/W	•				9045-5-3-897-91
		25°	4000 K	2190 lm	115 lm/W	•				9045-6-3-898-91
		Asymmetric	3000 K	1870 lm	98 lm/W	•				9045-9-3-897-91
	22 W	25°	RGBW	1590 lm	72 lm/W				•	9045-6-D-687-91
		46°	RGBW	1460 lm	66 lm/W				•	9045-7-D-687-91
		Asymmetric	RGBW	1440 lm	65 lm/W				•	9045-9-D-687-91
	28 W	46°	3000 K	2600 lm	92 lm/W	•				9045-7-3-867-91
		Asymmetric	3000 K	2670 lm	95 lm/W	•				9045-9-3-867-91
	32 W	25°	RGBW	2020 lm	63 lm/W				•	9045-6-D-740-91
		46°	RGBW	1870 lm	58 lm/W				•	9045-7-D-740-91
		Asymmetric	RGBW	1850 lm	57 lm/W				•	9045-9-D-740-91

*Please contact sales team for special request.



Courtyard By Marriott, Aravali Resort, Ncr, Delhi - INDIA