

CHARISMA

■ BOLLARD

The **CHARISMA** range presents a sophisticated selection of compact to mid-size bollards, designed for a wide range of residential, community, and commercial applications. Offering a sleek, modern aesthetic, each bollard is pre-wired with double-insulated construction, ensuring both safety and straightforward installation. CHARISMA bollards are equipped with high-efficiency reflectors and COB LEDs, delivering exceptional brightness with excellent color rendering. Available in three color temperatures—2700K, 3000K, and 4000K—these bollards provide versatile lighting solutions to meet various ambiance and task lighting needs.

With built-in drivers for basic on-off functionality, the bollards also offer options for 1-10V dimmable and DALI dimmable systems, allowing for greater control over light output and energy efficiency. The clear polycarbonate cover is paired with internal glare suppression louvers to reduce upward light emission, minimizing light pollution while enhancing the quality of the light. For those seeking a softer, more ambient effect, an optional opal diffuser is available, ensuring smooth, even illumination and consistent color quality across the space.

The height of the bollards can be customized to accommodate specific project requirements, providing a tailored solution for any outdoor space. An anchorage unit is also available, ensuring secure and stable installation in a variety of environments. The CHARISMA range seamlessly blends style, performance, and flexibility, offering a durable and energy-efficient lighting solution that enhances the aesthetic and functionality of outdoor areas.



www.unilamp.co.th/en/p/charisma

Specification

- Designed, manufactured and tested according to IEC 60598.
- LM6 die cast aluminum housing.
- Stainless steel screws.
- Nano ceramic surface conversion.
- Double layer coating.
- Safety glass cover.
- Post-cured silicone gasket.
- High quality LED module and driver.
- GFR PA6.6 terminal block.
- Installation must be carried out according to the enclosed product manual.

Available Color

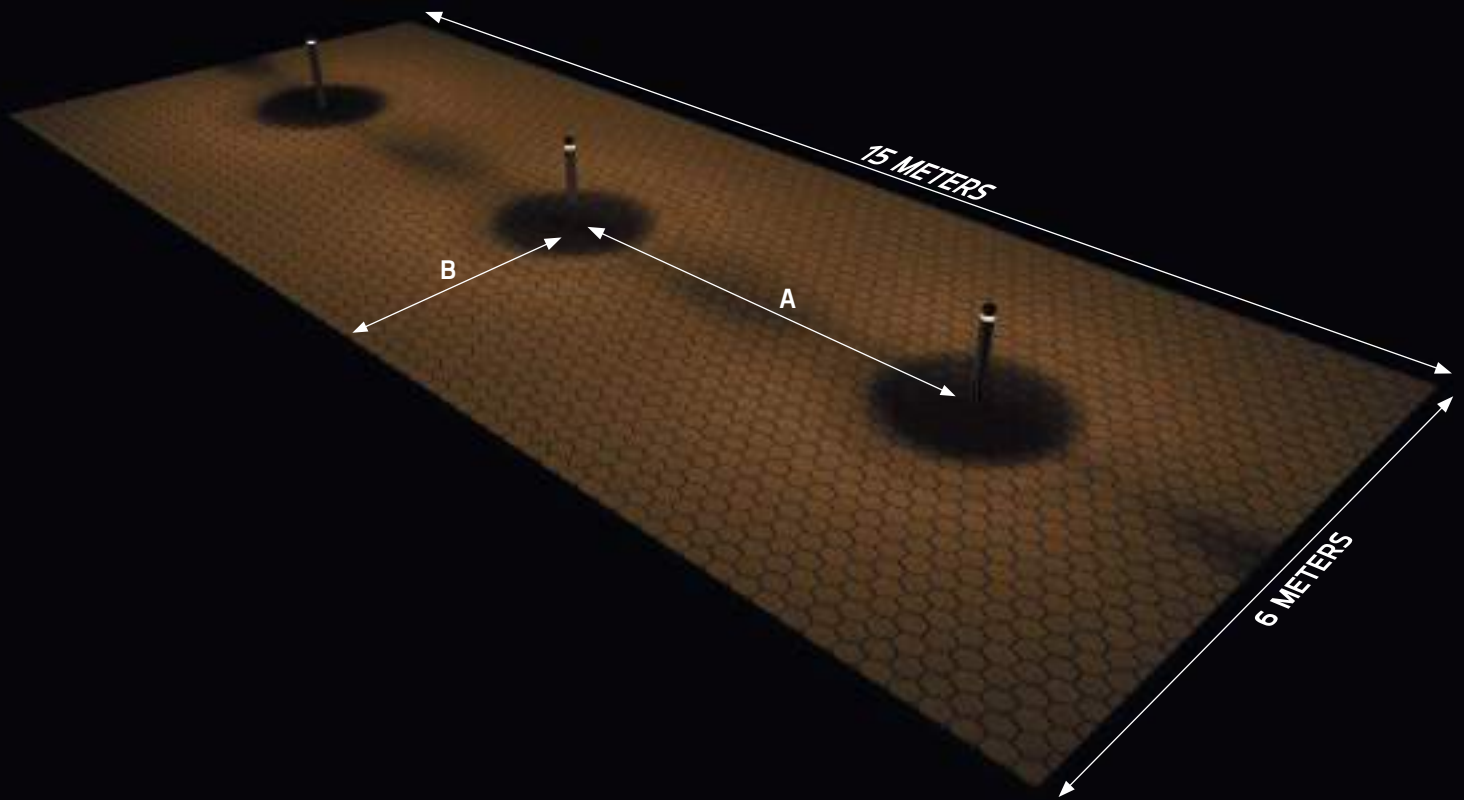


CHARISMA

- 1. Reflector**
High efficiency anodize brightened CAD reflector.
- 2. Cover**
Self-extinguishing PC protective cover. Protect against UV rays and mechanical impact.
- 3. Driver**
High quality LED constant current driver. Complied with Safety and EMC regulations.
- 4. Gear compartment**
Injected GFR polymer housing. Protect against harmful dust and jet water.
- 5. Body Housing**
Corrosion resistant extruded aluminum housing with Nano Ceramic protection film.

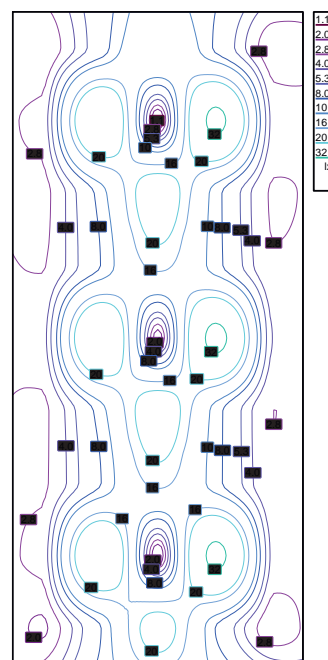
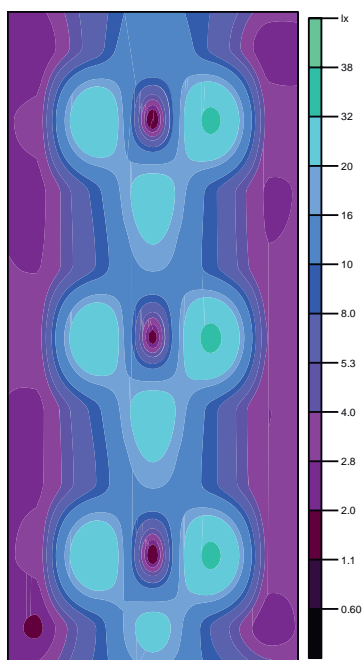


CHARISMA



PRODUCT NAME : Medium CHARISMA4 – Round Bollard
 TYPE : LED 23W 1440lm 3000K
 ORDERING CODE : 7859-0-3-902-XX

DISTANCE A : 5 METERS.
 DISTANCE B : 3 METERS.
 MOUNTING HEIGHT : 0.9 METERS.





CHARISMA



Mini CHARISMA Round



Mini CHARISMA Square



Mini CHARISMA Round

Application Type : Bollard
Subgroup : Semi shielded bollard / General bollard

Mini CHARISMA Round / 7821
Mini CHARISMA Round / 7822
Mini CHARISMA Round / 7823

Luminaire Performance

420 – 810 lm
14 W
30 – 57 lm/W

Beam Options



Color Temperature

2700K/ 3000K/ 4000K

Controller

On-Off/ 1-10V/ DALI

Input Options

220-240Vac 50/60Hz

Accessories



Anchor bolt



IP68
Connector

Mini CHARISMA Square

Application Type : Bollard
Subgroup : Semi shielded bollard / General bollard

Mini CHARISMA Square / 7824
Mini CHARISMA Square / 7825
Mini CHARISMA Square / 7826

Luminaire Performance

410 – 650 lm
14 W
29 – 46 lm/W

Beam Options



Color Temperature

2700K/ 3000K/ 4000K

Controller

On-Off

Input Options

220-240Vac 50/60Hz

Accessories



Anchor bolt



IP68
Connector



Medium CHARISMA Round



Medium CHARISMA Round

Application Type : Bollard
 Subgroup : Semi shielded bollard / Shielded bollard












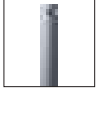
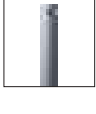
Medium CHARISMA Round / 7156	
Medium CHARISMA Round / 7157	
Medium CHARISMA Round / 7859	
Luminaire Performance	
	720 - 1690 lm
	19 - 26 W
	37 - 65 lm/W
Beam Options	
Color Temperature	
	2700K/ 3000K/ 4000K
Controller	
	On-Off/ 1-10V/ DALI/ CASAMBI
Input Options	
	220-240Vac 50/60Hz

Accessories	
	Anchor bolt
	IP68 Connector



Terminal 21, Nakhon Ratchasima - THAILAND

CHARISMA

	Product Code	Luminaire Wattage	Beam	CCT	Luminaire Lumen	Efficacy	Controller				Ordering Code			
														
Mini CHARISMA Round		14 W	N/A	2700 K	730 lm	52 lm/W	•	•	•	•	7821-0-3-503-XX 7821-0-3-901-XX 7821-0-3-904-XX 7821-0-4-901-XX 7821-0-5-904-XX			
				3000 K	770 lm	55 lm/W						•		
				4000 K	810 lm	57 lm/W						•		
Mini CHARISMA Square		14 W	N/A	3000 K	540 lm	38 lm/W	•	•	•	•	7822-0-3-901-XX 7822-0-3-904-XX			
				4000 K	570 lm	40 lm/W						•		
				2700 K	420 lm	30 lm/W						•		
Mini CHARISMA Square		14 W	N/A	3000 K	440 lm	31 lm/W	•	•	•	•	7823-0-3-503-XX 7823-0-3-901-XX 7823-0-3-904-XX			
				4000 K	460 lm	32 lm/W						•		
				2700 K	590 lm	42 lm/W						•		
Mini CHARISMA Square		14 W	N/A	3000 K	620 lm	44 lm/W	•	•	•	•	7824-0-3-503-XX 7824-0-3-901-XX 7824-0-3-904-XX			
				4000 K	650 lm	46 lm/W						•		
				3000 K	520 lm	37 lm/W						•		
Mini CHARISMA Square		14 W	N/A	4000 K	550 lm	39 lm/W	•	•	•	•	7825-0-3-901-XX 7825-0-3-904-XX			
				3000 K	410 lm	29 lm/W						•		
				4000 K	430 lm	30 lm/W						•		
Medium CHARISMA Round		19 W	N/A	2700 K	920 lm	48 lm/W	•	•	•	•	7156-0-3-506-XX 7156-0-3-887-XX 7156-0-3-891-XX			
		3000 K	970 lm	51 lm/W	•									
		4000 K	990 lm	52 lm/W	•									
Medium CHARISMA Round		26 W	N/A	3000 K	1320 lm	50 lm/W	•	•	•	•	7156-0-3-902-XX 7156-0-3-905-XX			
		4000 K	1360 lm	52 lm/W	•									
		3000 K	720 lm	37 lm/W	•									
Medium CHARISMA Round		19 W	N/A	3000 K	980 lm	37 lm/W	•	•	•	•	7157-0-3-887-XX 7157-0-3-902-XX 7157-0-3-905-XX 7157-0-5-902-XX			
				4000 K	1010 lm	38 lm/W						•		
				3000 K	980 lm	37 lm/W						•		
Medium CHARISMA Round		26 W	N/A	2700 K	1150 lm	60 lm/W	•	•	•	•	7859-0-3-506-XX 7859-0-3-887-XX 7859-0-3-891-XX			
				3000 K	1200 lm	63 lm/W						•		
				4000 K	1230 lm	64 lm/W						•		
				2700 K	1150 lm	60 lm/W	•	•	•	•	•	•	7859-0-4-506-XX 7859-0-4-887-XX 7859-0-4-891-XX	
					3000 K	1200 lm								63 lm/W
					4000 K	1230 lm								64 lm/W
				2700 K	1150 lm	60 lm/W	•	•	•	•	•	•	7859-0-5-506-XX 7859-0-5-887-XX 7859-0-5-891-XX	
					3000 K	1200 lm								63 lm/W
					4000 K	1230 lm								64 lm/W
				2700 K	1150 lm	60 lm/W	•	•	•	•	•	•	7859-0-A-506-XX 7859-0-A-887-XX 7859-0-A-891-XX	
					3000 K	1200 lm								63 lm/W
					4000 K	1230 lm								64 lm/W
				2700 K	1580 lm	60 lm/W	•	•	•	•	•	•	7859-0-3-505-XX 7859-0-3-902-XX 7859-0-3-905-XX	
					3000 K	1650 lm								63 lm/W
					4000 K	1690 lm								65 lm/W
2700 K	1580 lm	60 lm/W	•	•	•	•	•	•	7859-0-4-505-XX 7859-0-4-902-XX 7859-0-4-905-XX					
	3000 K	1650 lm								63 lm/W				
	4000 K	1690 lm								65 lm/W				
2700 K	1580 lm	60 lm/W	•	•	•	•	•	•	7859-0-5-505-XX 7859-0-5-902-XX 7859-0-5-905-XX					
	3000 K	1650 lm								63 lm/W				
	4000 K	1690 lm								65 lm/W				
2700 K	1580 lm	60 lm/W	•	•	•	•	•	•	7859-0-A-505-XX 7859-0-A-902-XX 7859-0-A-905-XX					
	3000 K	1650 lm								63 lm/W				
	4000 K	1690 lm								65 lm/W				

*Please contact sales team for special request.

