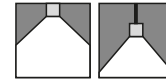


220-240V
50/60 HzIK
06IP
65

Hermetic LED luminaire, water-jet protected, dedicated to use in industrial environments.

TECHNICAL DATA

Mounting: directly on the ceiling, suspended, with mounting brackets (included)

Body: polycarbonate

Colour: gray

Diffuser: polycarbonate

ELECTRICAL DATA

Power supply efficiency: >91%

Power: 220-240V 50/60Hz

Includes light source: yes

Type of equipment: STANDARD, STUCCHI connector, DALI, STANDARD + TW 5x2,5 mm², EM 3h, choke

Electrical connection: tight connector 3x2,5 mm², tight connector 5x2,5 mm², max 4x1,5 mm² wire

OPTICAL DATA

Light distribution: rotationally-symmetric

Way of lighting: direct

GENERAL DATA

Lifetime (L80B10): 60 000 h

Additional information: stainless steel clips included

Other remarks: outdoor use only under a cover, do not expose to direct sunlight and rain

Warranty: 3 years

Application: parking areas, production halls, electricity plants, roofing



Code	Replacement of conventional technology [W]	Luminaire power [W]	Lumen luminaire [lm]	Efficacy [lm/W]	Colour temperature [K]	CRI/ Ra	Operating temperature range [°C]	Emergency kit
Type of equipment: STANDARD,STUCCHI connector								
300090.00002	2x36W (82W)	35	4300	123	4000	≥80	-20 ... +35	no
300090.00004	2x58W (128W)	51	6300	124	4000	≥80	-20 ... +35	no
300090.00053	2x80W (184W)	80	11600	145	4000	≥80	-20 ... +35	no
300090.00062	2x58W (128W)	45	6050	134	4000	≥80	-20 ... +35	no
Type of equipment: DALI,STUCCHI connector								
300090.00015	2x36W (82W)	35	4300	123	4000	≥80	-20 ... +35	no
300090.00017	2x58W (128W)	51	6300	124	4000	≥80	-20 ... +35	no
300090.00055	2x80W (184W)	80	11600	145	4000	≥80	-20 ... +35	no
300090.00070	2x58W (128W)	45	6050	134	4000	≥80	-20 ... +35	no
Type of equipment: STANDARD + TW 5x2,5 mm²,STUCCHI connector								
300090.00006	2x36W (82W)	35	4300	123	4000	≥80	-20 ... +35	no
300090.00008	2x58W (128W)	51	6300	124	4000	≥80	-20 ... +35	no
300090.00056	2x80W (184W)	80	11600	145	4000	≥80	-20 ... +35	no
Type of equipment: STANDARD,EM 3h,STUCCHI connector								
300090.00002B	2x36W (82W)	37	4300	116	4000	≥80	0 ... +35	yes
Type of equipment: STANDARD,EM 3h,choke								
300090.00062B	2x58W (128W)	53	6050	114	4000	≥80	0 ... +35	yes

Code	Dimensions [mm] L W H	Mounting dimensions [mm] D	Pallet quantity	Quantity in package	Net weight [kg]
Type of equipment: STANDARD,STUCCHI connector					
300090.00002	1340 84 99	800	120	1	1.7
300090.00004	1340 84 99	800	120	1	1.7
300090.00053	1650 134 99	1100	60	1	2.8



Luminous flux tolerance +/- 10%.

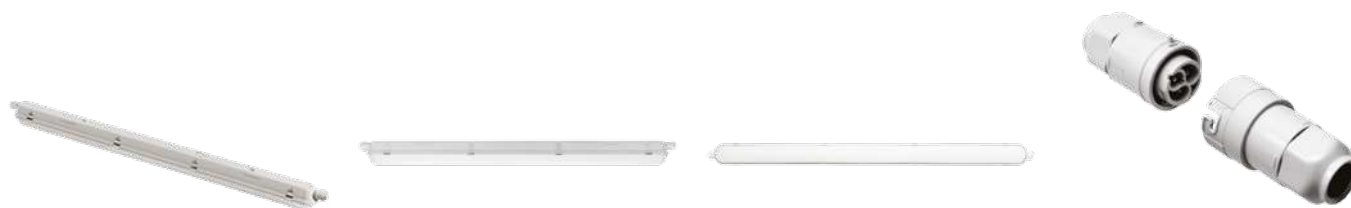
Power tolerance +/- 5%.

Lighting beam, light intensity distribution and light efficiency were examined in accordance with the EN ISO 17025:2005 norm for EN13032 norm series and the LM-79 norm.

Up-to-date product info available on our website www.lugbox24.com

Code	Dimensions [mm] L W H	Mounting dimensions [mm] D	Pallet quantity	Quantity in package	Net weight [kg]
Type of equipment: STANDARD,STUCCHI connector					
300090.00062	1650 134 99	1100	60	1	2.8
Type of equipment: DALI,STUCCHI connector					
300090.00015	1340 84 99	800	120	1	1.7
300090.00017	1340 84 99	800	120	1	1.7
300090.00055	1650 134 99	1100	60	1	2.8
300090.00070	1650 134 99	1100	60	1	2.8
Type of equipment: STANDARD + TW 5x2,5 mm²,STUCCHI connector					
300090.00006	1340 84 99	800	120	1	1.8
300090.00008	1340 84 99	800	120	1	1.8
300090.00056	1749 134 99	1100	60	1	3.0
Type of equipment: STANDARD,EM 3h,STUCCHI connector					
300090.00002B	1340 84 99	800	120	1	2.2
Type of equipment: STANDARD,EM 3h,choke					
300090.00062B	1585 134 99	1100	60	1	3.3

OTHER PICTURES



Stucchi connector

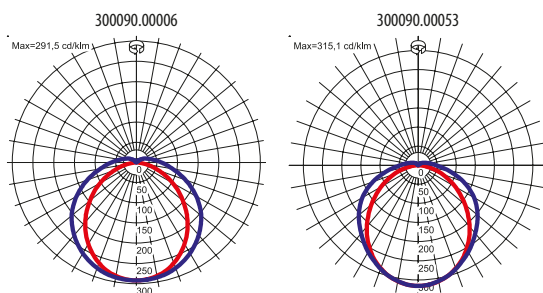
ACCESSORIES



150020.00695

Through wiring luminaire line end cap
(STANDARD + TW5x2,5 mm²)

LIGHT BEAM CURVES



Luminous flux tolerance +/- 10%.

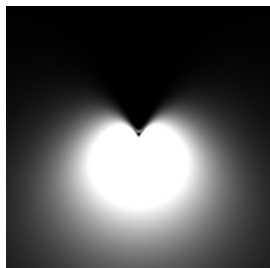
Power tolerance +/- 5%.

Lighting beam, light intensity distribution and light efficiency were examined in accordance with the EN ISO 17025:2005 norm for EN13032 norm series and the LM-79 norm.

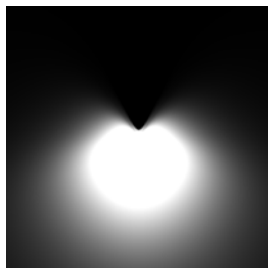
Up-to-date product info available on our website www.lugbox24.com

WAY OF LIGHTING

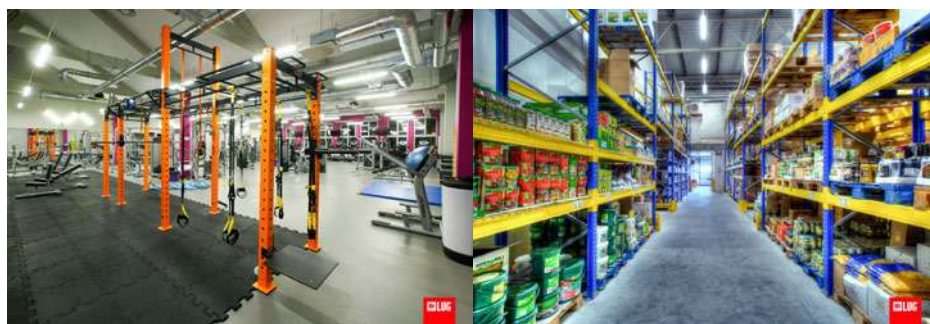
300090.00006



300090.00053

**OTHER PROJECTS**

Comarch, Lodz, Poland



Everest Fitness, Zielona Gora, Poland

Farutex, Zielona Góra, Poland



LUG Research and Production Centre, Nowy Kisielin, Poland

Luminous flux tolerance +/- 10%.

Power tolerance +/- 5%.

Lighting beam, light intensity distribution and light efficiency were examined in accordance with the EN ISO 17025:2005 norm for EN13032 norm series and the LM-79 norm.

Up-to-date product info available on our website www.lugbox24.com